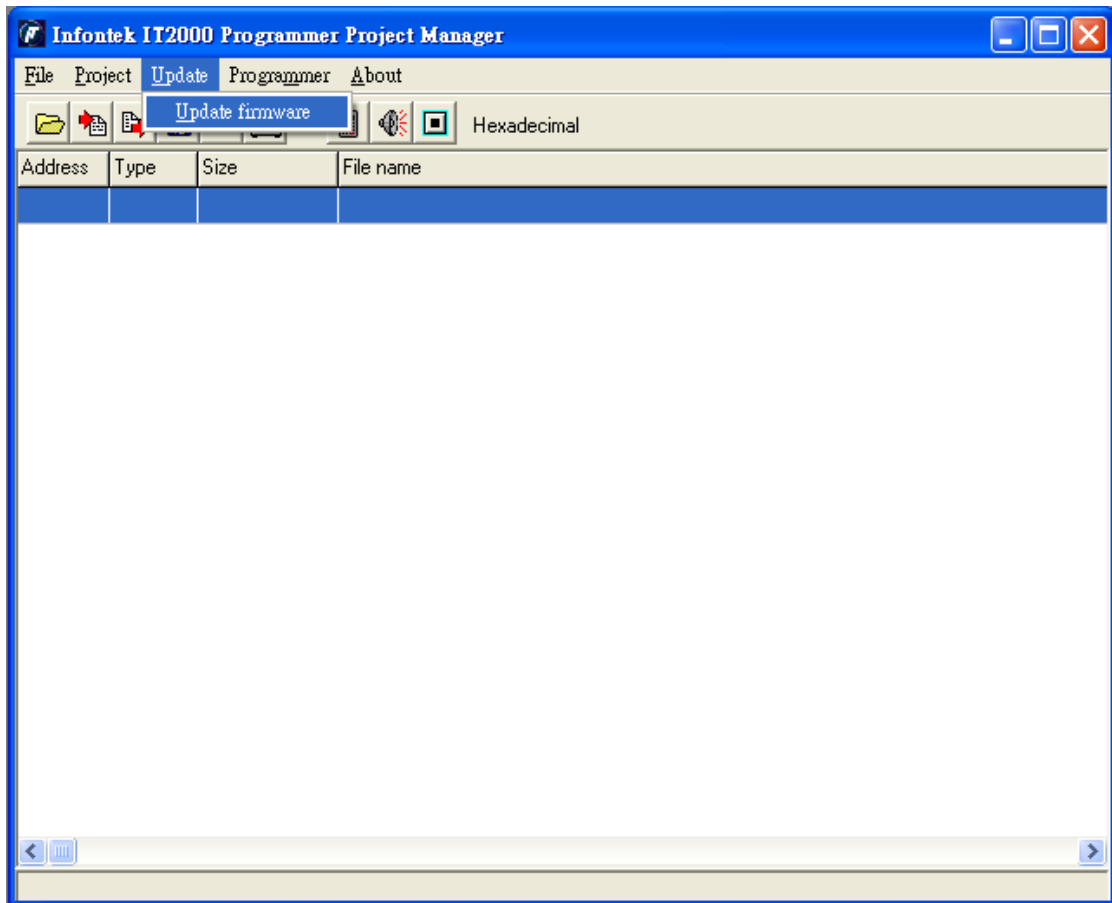


## IT2000 Firmware Version and Support Parts

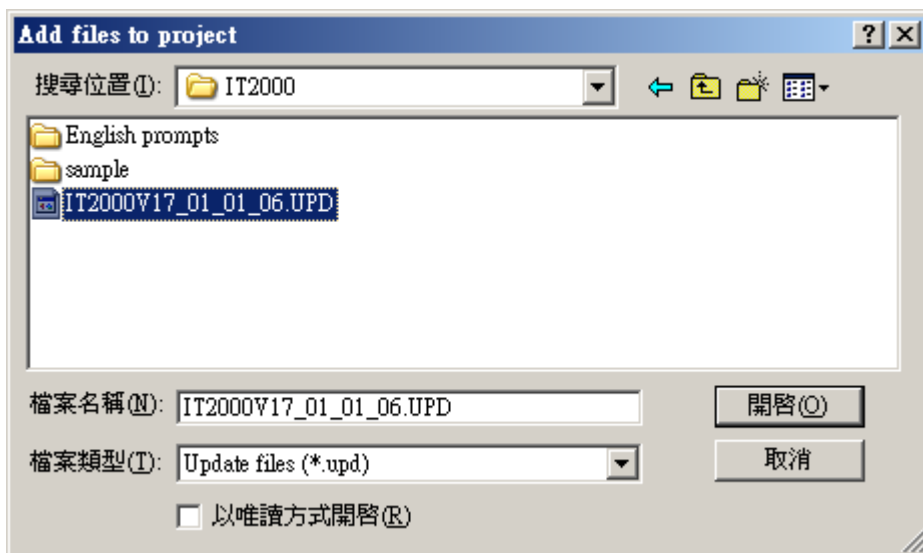
Firmware Version	Support Parts
<b>1.2.7</b>	1400 series 1600 series 2532 series 2560 series 4002 series 4003 series 4004 series 5008 series 5100 series 5216 series
<b>1.3.3</b>	1600 series 1700 series 2532 series 2560 series 4002 series 4003 series 4004 series 5100 series 5216 series
<b>1.3.4</b>	1600 series 1700 series 15100 series 1916 series 4002 series 4003 series 4004 series

### The procedure to update the Firmware of IT2000

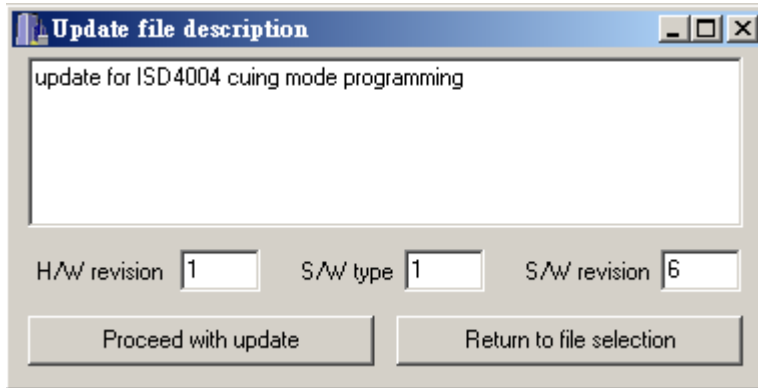
1. Connect the RS232 cable to IT2000 programmer from PC.
2. Open the IT2000 project software.
3. Execute the function of "Update/Update firmware"



- 4.
5. Open the \*.upd update file.



- 6.
7. Execute the "Proceed with update"



8.

9. As the update is proceeding, the LEDs of IT2000 will be flash with green and then red. After the update is completed, it will say the "Ready" prompt and give the successful message.



10.